



Zinstall zPOD User Guide



Zinstall zPOD User Guide

Thank you for purchasing Zinstall zPOD.

If you have any questions, issues or problems, please contact us:

Toll-free phone: **(877) 444-1588**

International callers: **+1-877-444-1588**

Support email: support@zinstall.com

Sales email: sales@zinstall.com

Visit our website: www.zinstall.com

Copyright © ZVT, Inc., 2009-2011. All rights reserved.

“Zinstall”, “Zinstall XP7”, “Zinstall zPOD”, “Zinstall WinWin”, “Zinstall HDD”, “Zinstall WinServ” and the Zinstall logo are registered trademarks of ZVT, Inc.

“Windows”, “Windows XP”, “Windows Vista”, “Windows 7” are registered trademarks of Microsoft Corporation.

All other trademarks and copyrights referred to are the property of their respective owners.

Distribution of modified versions of this document is prohibited without the explicit permission in writing of the copyright holder. Distribution of this work or derivative work for commercial purposes is prohibited unless prior permission is obtained from the copyright holder.

DOCUMENTATION IS PROVIDED “AS IS” AND ALL EXPRESS OR IMPLIED CONDITIONS, REPRESENTATIONS AND WARRANTIES, INCLUDING ANY IMPLIED WARRANTY OF MERCHANTABILITY, FITNESS FOR A PARTICULAR PURPOSE OR NON-INFRINGEMENT, ARE DISCLAIMED, EXCEPT TO THE EXTENT THAT SUCH DISCLAIMERS ARE HELD TO BE LEGALLY INVALID.

Contents

Zinstall zPOD User Guide	1
Contents.....	3
Introduction	6
Quick Start.....	6
Initial creation of a zPOD:.....	7
Launching zPOD on any computer:.....	7
System Requirements.....	8
Migration Source: Old Computer / zPOD Guest.....	8
Migration Target: New Computer / zPOD Host.....	8
Operating system supported.....	8
Preparing for Migration	9
Before You Begin	9
Anti-virus / Internet security software	9
Initial creation of a zPOD	10
Advanced Configuration Options	15
Filtering out certain content types	15
Manually choosing migration source and target.....	15
Post-migration Use	16
The two “channels” environment.....	16
Launching the zPOD environment.....	16
Switching the channels	16
Exiting the zPOD environment	17
Environment integration.....	19
Appendix A.....	21
Downloading the software from the Internet: Zinstall zPOD Creator	21
Web Activation	22
CHKDSK	23
Converting a FAT32 drive to NTFS file system.....	23
Appendix B - Printer Sharing Guide	24

Troubleshooting Guide	31
Message Codes.....	31
Message Code	31
Troubleshooting instructions	31
Before the Migration	37
What is a Network / Ethernet / LAN cable?	37
The old computer is broken. Can I still use Zinstall to transfer?	37
There is not enough space on the target computer. What can be done?	38
Do I have to backup my computer before upgrading to Windows 7 with Zinstall?	38
Zinstall disappears after showing the initial “Loading...” screen.....	38
During the migration	39
Is it possible to select which files to transfer?	39
Is it possible to select which programs to transfer?	39
The Old and New computers cannot find each other – “searching” for more than 5 minutes	40
The external hard drive used for zPod has USB connection problems.....	40
After the Migration.....	41
How to run <i>zPOD Desktop</i> applications from the <i>Computer Desktop / Start Menu</i> ?.....	41
Microsoft Windows / Office Activation	41
Printer problems on the zPOD Desktop	41
How to copy files and text between the desktops?	41
Can Security Software be run on both desktops?	42
How to access external USB drives on the zPOD Desktop?	42
Mouse cursor is not visible on the zPOD Desktop.....	43
Internet connection is not available on the zPOD Desktop	43
After switching to zPOD Desktop, the system automatically switches back to Computer Desktop	44
Zinstall tray icon has disappeared or does not appear on Windows startup (Zinstall XP7 only)	44
Mouse cursor / screen resolution issues on zPOD Desktop.....	44
Can I use Zinstall with dual monitors?	45
Using server applications inside the zPOD Desktop	45
How to properly shut down your TARGET computer running Zinstall	45

“Access denied” message is received when using the “Show zPOD Desktop files”	45
Advanced	46
How to create a shortcut to zPOD Desktop application on the Computer Desktop?	46
How to revert the zPOD Desktop to original state?	46
How to backup the Zinstall environment.....	46
How to uninstall the Zinstall environment.....	47
What keyboard shortcuts are available for Zinstall?	47

Introduction

Zinstall zPOD allows you to capture your entire computer, with all applications, settings and files, to a portable external hard drive or USB flash drive.

Usage steps:

Downloading an existing system into an external hard drive

At this step you need to run the zPod creator on a computer you wish to transfer, the zPod creator will take the entire system and store it to a container on the external hard drive.

Executing a zPod on any computer

After creating the zPod for the first time, it is now possible to plug the external hard drive containing the zPod system to a computer, and execute a virtual environment that has your entire system. You can plug the zPod into the same computer you created the zPod from, or to any other computer. Note that the computer on which the zPod is executed on, must meet the minimum execution (target) system requirements.

This User Guide will walk you through using the zPOD, and provide answers to questions you may have.

Quick Start

Please make sure to read the **Preparing for Migration** on **page 9** before starting.

After you complete the transfer, please read **page16, Post-migration Use**, in order to make yourself familiar with the software and environment.

If you are using a USB printer, please refer to **page 24, Appendix B - Printer Sharing Guide** after the migration.

If you encounter any problem or issue, refer to the **Troubleshooting Guide on page 31**:

1. If you receive a message from the software, refer to the **Message Codes** table on **page 31**
2. If you have questions regarding the proper way to operate the software – see:
 - a. **Before the Migration – page 37**
 - b. **During the migration – page 39**
 - c. **After the Migration – page 41**

Initial creation of a zPOD:

This quick guide provides the outline of a initial zPOD creation. This is a quick guide. For a step-by-step walkthrough, and more details, see **page 10**.

1. Before you begin, make sure all firewalls on the computer are uninstalled (or configured to allow Zinstall operation and connections).
2. Connect the storage device (external hard drive / USB flash drive) to the computer you wish to create a zPOD of.
3. If an Internet connection is available, connect the computer to the Internet to simplify product activation.
4. Install Zinstall zPOD on the computer. If it was purchased electronically, download Zinstall zPOD from the link you have received in the License Information email. If purchased on a CD, install Zinstall zPOD from the CD.
5. Run zPOD on the computer
6. When prompted, enter your license information and activate the product
7. Once activation is successful, the computer is no longer required to be connected to the Internet
8. zPOD will search for available storage devices. After a few minutes, the "Go" button will become enabled. Verify the selected storage device is the one you intend to use.
9. Press the "Go" button on your new computer when ready

Launching zPOD on any computer:

This is a quick guide. For a step-by-step walkthrough, and more details, see **page 16**.

1. Connect your zPOD drive to the computer
2. Run the RunZPOD.exe file on the drive
3. The zPOD tray icon will appear in system tray (bottom-right corner of the screen, near the clock)
4. Use the zPOD tray icon to switch to the zPOD environment

System Requirements

Migration Source: Old Computer / zPOD Guest

	Minimum	Recommended
Processor¹	Intel Pentium 3 or AMD Athlon CPU	Intel or AMD Dual core CPU
Memory	512 MB RAM	1GB RAM or higher
Hard drive free space	1GB	20GB
Network Adapter	10/100 network adapter / wireless	Gigabit network adapter

Migration Target: New Computer / zPOD Host

	Minimum	Recommended
Processor	Intel Pentium 4 or AMD Athlon XP CPU	Intel or AMD Dual core CPU
Memory	2GB RAM	3GB RAM or higher
Hard drive free space	1GB and, in addition, enough space for transferred applications and files	20GB and, in addition, enough space for transferred applications and files
Network Adapter	10/100 network adapter / wireless	Gigabit network adapter

Operating system supported

Operating system	Source	Target
Windows 2000	Yes ²	No
Windows XP	Yes	Yes
Windows 2003 server	Yes	Yes
Windows Vista	Yes	Yes
Windows 2008 server	Yes	Yes
Windows 7	Yes	Yes

¹ For **64-bit SOURCE** computers, [hardware assisted virtualization](#) support is required on the target computer. [Click here to check if your target computer supports it.](#)

² Migration from Windows 2000 is possible by first upgrading to Windows XP.

Preparing for Migration

Before You Begin

Before beginning the transfer process, it is strongly recommended to prepare your system according to the following checklist. Doing so will ensure the migration is successful and not affected by possible system issues.

Do the following on both **SOURCE** and **TARGET**:

1. Uninstall / disable all security software, antivirus or firewalls.
2. Close all running applications.
3. It is recommended – especially for older machines – to verify file system consistency by running the standard Windows CHKDSK utility. For further instructions, see *page 22*, **CHKDSK**.
4. If one of the hard drives you are using (either SOURCE or TARGET) is formatted with the FAT32 file system, it is required to convert them to NTFS before performing the migration. For further instructions, see *page 23*, **Converting a FAT32 drive to NTFS** file system.
5. Make sure there is at least 1 GB free space on each hard drive.

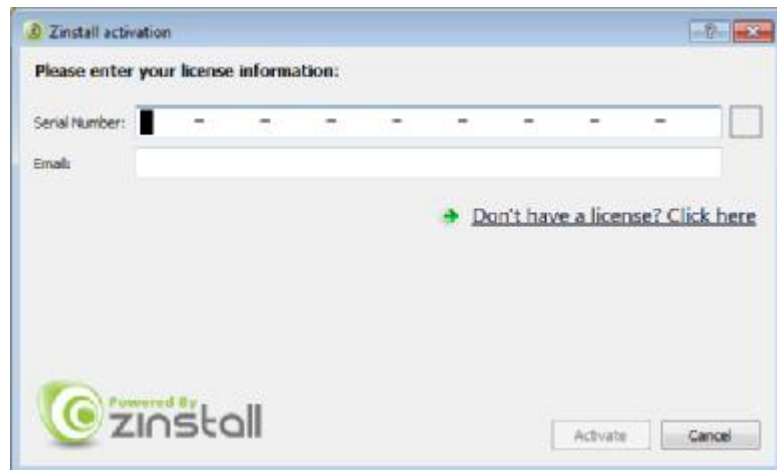
Anti-virus / Internet security software

Some releases of anti-virus / internet security software products lack a proper identifying mechanism and might mistakenly consider Zinstall to be a threat. Zinstall code is digitally signed, according to policy, by official worldwide Certification Authority; nevertheless, some of the anti-virus / internet security software might automatically, and without asking the user, prevent Zinstall from normal execution. It is recommended to uninstall anti-virus / internet security software before performing the migration. Alternatively, contact the vendor of the anti-virus / internet security software, in order to get instructions on how to add Zinstall to the “white list” of permitted software.

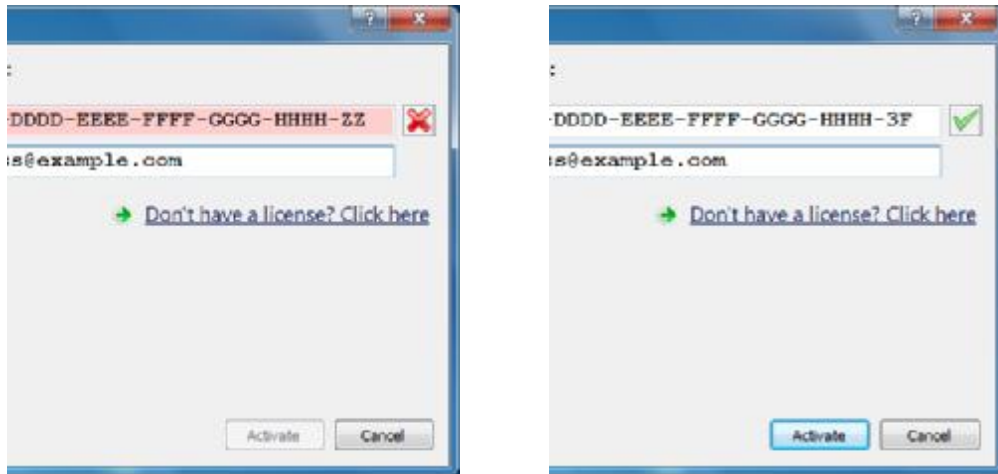
Initial creation of a zPOD

The instructions below explain how to “zPOD” a computer – that is, initially create the zPOD environment, capturing all applications, settings and files from a computer into the zPOD.

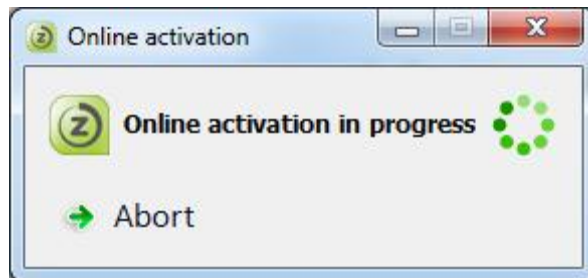
1. Turn the computer on, and start Windows
2. If an Internet connection is available, connect the computer to the Internet to simplify product activation.
3. Attach the storage which you will use to store the zPOD on. This can be:
 - a. External hard drive
 - b. USB flash drive
 - c. SSD drive
 - d. Network attached storage (NAS/SAN)
4. Put zPOD on the computer
 - a. If zPOD was purchased electronically, download the software using the link from the zPOD License Information email received after purchasing.
 - b. If zPOD was obtained as a packaged CD, then install the software from the CD
5. Run zPOD
6. Activate zPOD
 - a. When zPOD runs for the first time, you will be asked to enter the registered serial number and email as it was provided by you when the product was purchased electronically over the Internet.
7. Perform product activation using your serial number
 - a. When zPOD is purchased electronically over the Internet, the serial number is obtained from the License Information email, which is sent from Zinstall Support upon purchase.
 - b. When zPOD is purchased as a packaged CD, the serial number is printed on a sticker on the CD package.
 - c. You need to supply the serial number when prompted by the software.



- d. It is very important to provide a correct email address, otherwise you might experience difficulties in receiving support – Zinstall Support System recognizes licensed users by email address.
- 8. Enter your serial number and email address
 - a. If a red “X” appears to the right of the serial number, this means that the serial number has been accidentally mistyped. Double-check all of the characters, and correct the typo.
 - a. When a green checkmark appears to the right of the serial number, this means that the number has been typed correctly.

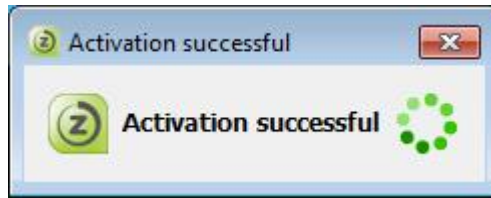


- 9. Press the “Activate” button. An “Activation in progress” message will appear:



- a. If the computer is connected to the Internet, the activation will be performed automatically over the Internet.
- b. If the computer cannot be connected to the Internet, the activation can be performed using any other Internet connection (“offline activation”). If this is the case, see 22, Web Activation below for further instructions.

10. After a successful activation, the following message will appear:



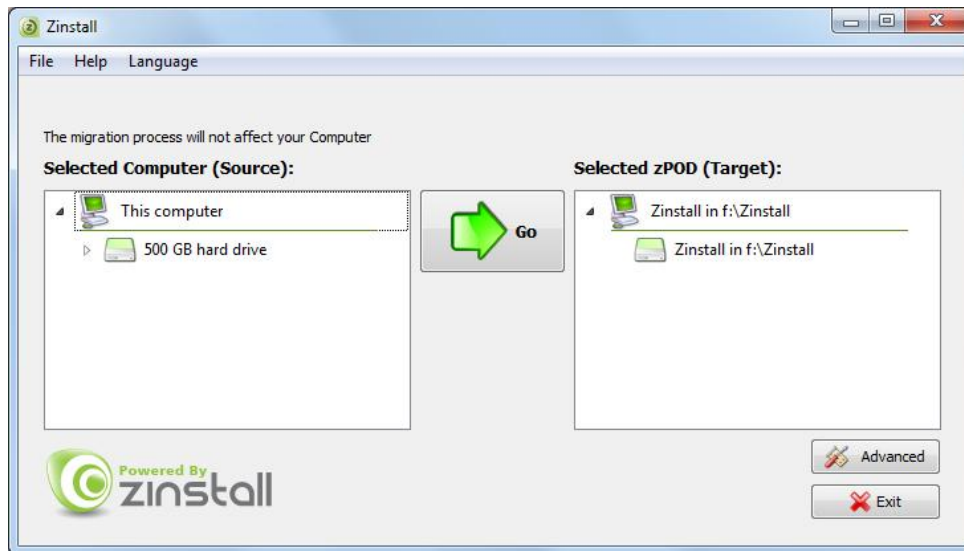
11. The computer is no longer required to be connected to the Internet

12. Wait for the "Go" button to become enabled

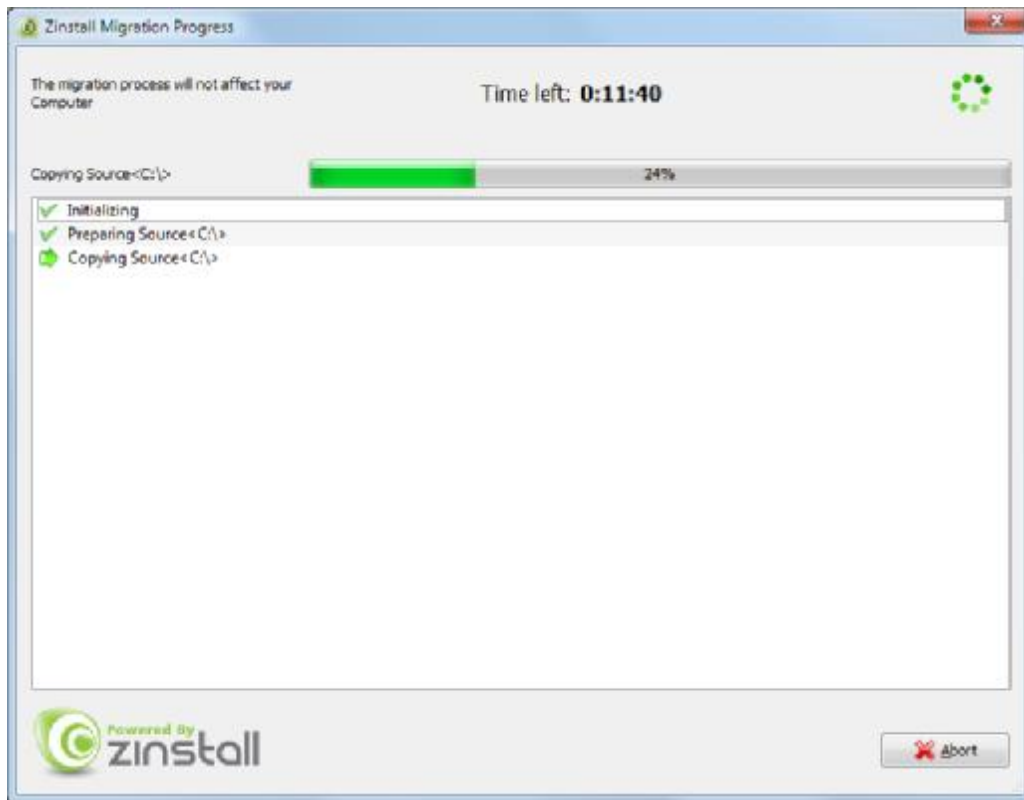
13. Once the migration source is detected, the "Go" and "Advanced" buttons will become enabled.

- a. Verify that the drive selected on the right (TARGET) is the zPOD storage drive you have connected
- b. The "Advanced" button allows configuring advanced migration options, such as content type filtering or choosing migration source and target.
- c. These options are mainly recommended for advanced users – if relevant for your task, refer to page 15, *Advanced Configuration Options* for detailed explanations.

14. Press the "Go" button to start the migration when ready.

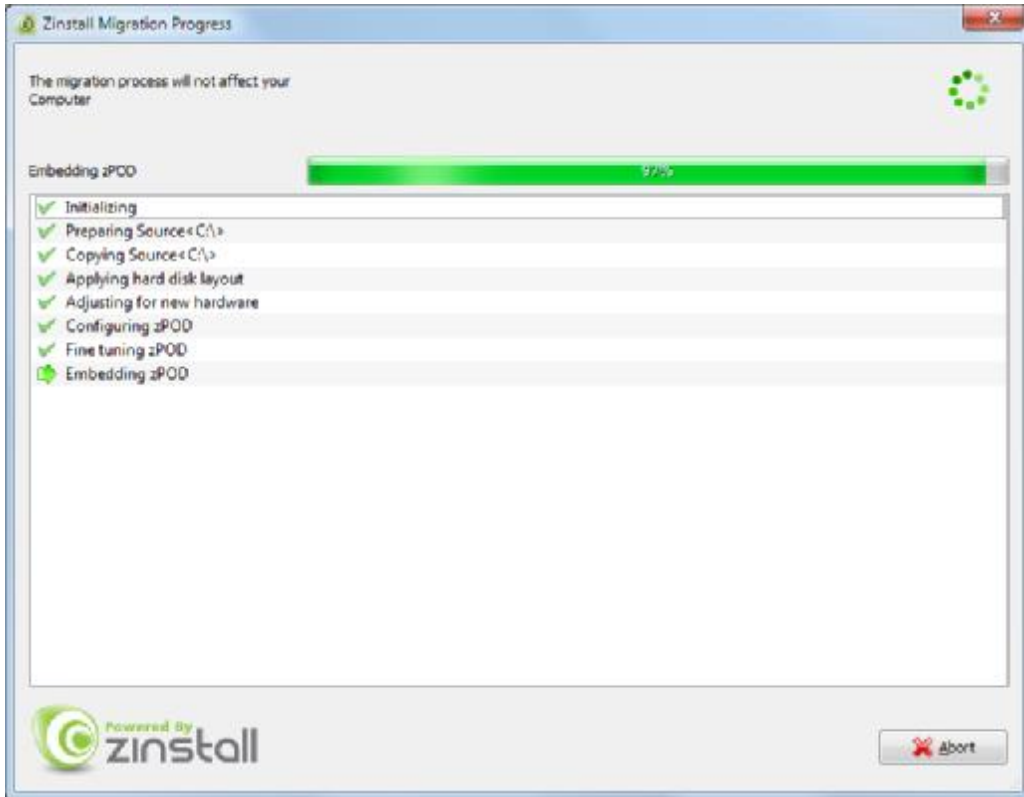


15. During the migration process zPOD shows how migration stages advance:

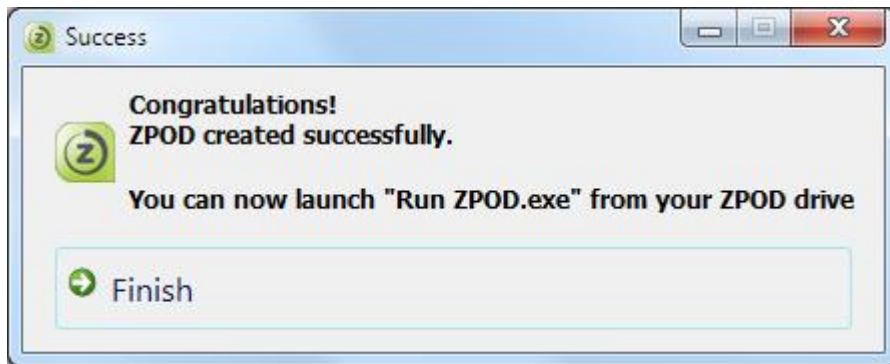


16. No user action is required at these stages.
17. You do not have to remain sitting near the computers – the entire process may take quite a while (sometimes, many hours are required). This depends on several factors, such as the condition of the hard drive, connection type and speed (USB2.0, USB3.0, Firewire, USB flash), processing power of the computer and, of course, the amount of data to be transferred.

18. **IMPORTANT:** Do not touch the computer until you see a message on the computer! Even if the progress bar does not advance for a long time, or the computer's display becomes black – this does not mean the computer is stuck. If the screen on the computer becomes black, move the mouse to turn it back on and see the progress.



19. Just be patient and wait for the entire migration process to be completed:

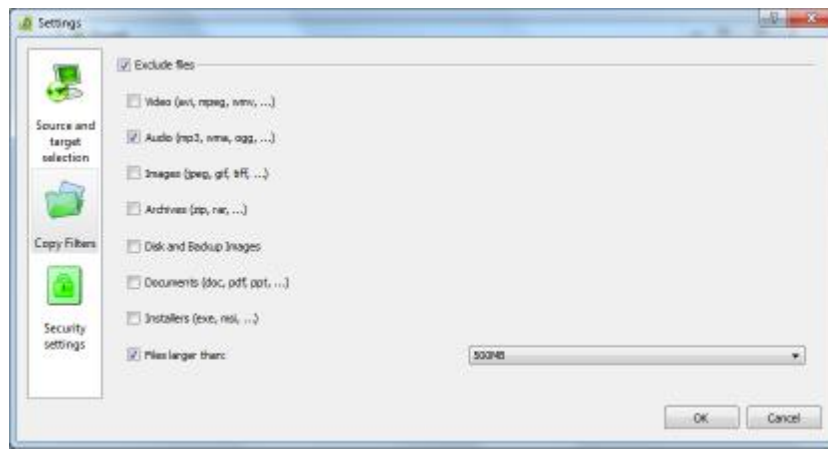


Advanced Configuration Options

When the Advanced button is pressed, Zinstall provides several advanced configuration options for tweaking and customizing the migration process.

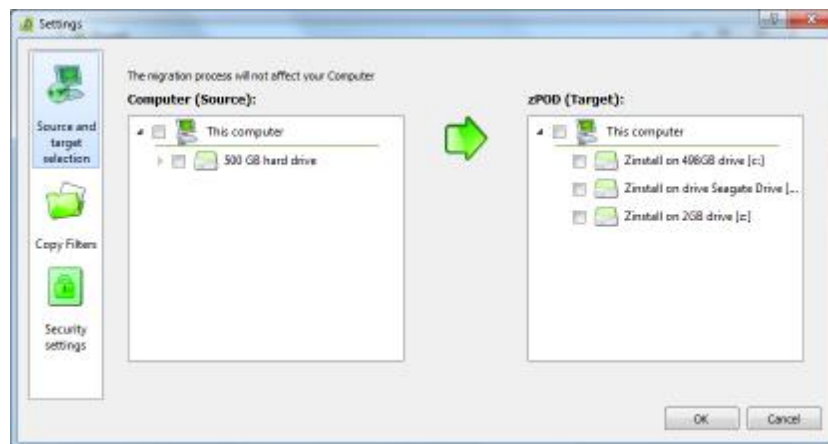
Filtering out certain content types

Several types of files can be excluded from the migration - this may shorten the migration process and save disk space. To exclude a certain file type, just check the appropriate checkbox near the unneeded file type category:



Manually choosing migration source and target

This option allows choosing migration source and target among several available computers, when there are several computers running Zinstall on the network, or when the source computer has several different hard drive partitions and/or hard drives. Choose which hard drives and volumes to migrate on the source system, and choose the destination drive on the target system.



Post-migration Use

This section deals with using Zinstall after the migration is complete. This usage is identical in all migration scenarios.

The two “channels” environment

After the migration is complete, Zinstall creates an environment with two “channels”:

1. HOST channel / Computer Desktop
2. GUEST channel / zPOD Desktop - a fully customized migrated environment, which looks and works exactly as the SOURCE system

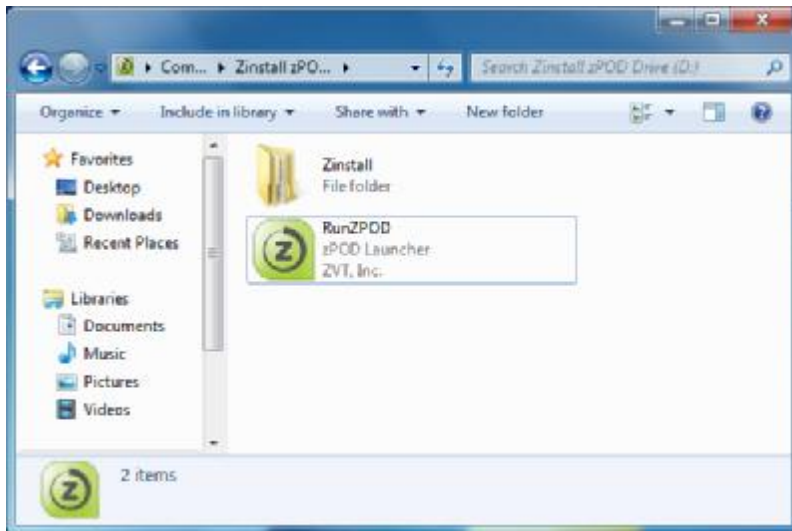
All migrated applications, settings and files are available and operational in the GUEST environment. Nothing is left behind, and all applications are 100% operational.

Switching between the environments is instantaneous - just like switching TV channels, and is performed using the Zinstall icon in system tray (bottom-right corner of your screen, near the clock).

Launching the zPOD environment

To launch your zPOD environment on any computer, you need to:

1. Connect the zPOD storage to the computer
2. Launch zPOD using the RunZPOD.exe file on the storage device

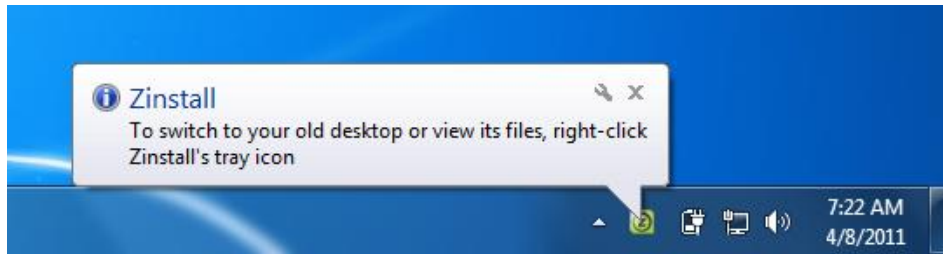


3. You will see the Zinstall tray icon appear in the bottom-right corner of the screen

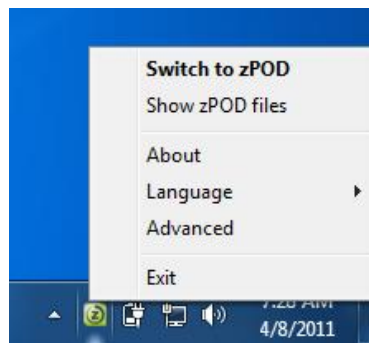
Switching the channels

There are two ways to switch between the two environments:

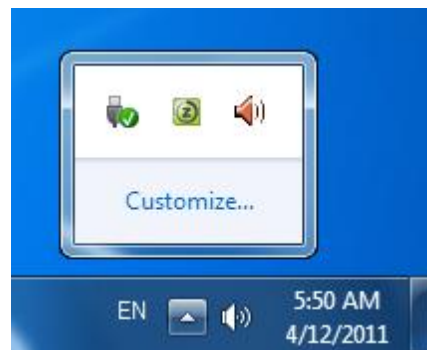
1. Double-clicking on the Zinstall tray icon



2. Right-clicking on the Zinstall tray icon and choosing the *Switch to zPOD/Computer*



Note: In Windows 7, the Zinstall tray icon may be placed into the “Additional icons” section of system tray. In that case, it can be accessed by clicking on the left-most “up arrow” icon of system tray.



Exiting the zPOD environment

To safely disconnect your zPOD from a host computer:

1. Make sure the ZPOD is currently not running:
 - a. Put your mouse cursor over the Zinstall tray icon - this will cause a tooltip text to appear.

Zinstall zPOD User Guide

- b. If the text says "(Off)" - that means the zPOD Desktop is currently NOT running, and you can shut down the computer
- c. If the text says "(Running)" - that means the zPOD Desktop is currently running, and you need to shut Zinstall down before shutting down the computer
 - i. Switch to zPOD Desktop
 - ii. Shut down the zPOD Desktop (using Start Menu -> Turn off/Shut down)
 - iii. Wait for the zPOD Desktop to shut down. You will now be switched back to the Computer Desktop.
2. Right click on the Zinstall tray icon, and select "Exit". This will exit the zPOD software
3. Safely remove the zPOD storage from the computer

Environment integration

To provide smooth and intuitive experience, the Computer Desktop and zPOD Desktop are fully integrated.

Accessing other channel's files and mass storage USB devices connected to the HOST system

For larger scale file access operations, you can access files of either channel directly from the other. This is done by right-clicking the Zinstall tray icon, and selecting the *Show zPOD Desktop/Computer Desktop files* option. This will open a Windows Explorer window showing all the files available on the other channel.

Copying files and text

You can copy files and text between the two channels just like you copy files and text between two different applications. For example, here is how you would copy a file from the zPOD Desktop to the Computer Desktop:

1. Right-click on the file in the zPOD Desktop
2. Select "Copy"
3. Switch to the Computer Desktop
4. Paste the file

Once the "copy" option is used on file or text on one channel, that content will be available for pasting on the other channel.

There are three alternative ways to copy files and directories between two environments:

1. How to use *Show zPOD Desktop files* in the Computer Desktop
 - a. Switch to the Computer Desktop
 - b. Right-click on the icon and select *Show zPOD Desktop files*
 - c. You will see folders each corresponding to a drive on your zPOD Desktop. You most probably need the one named "C:"
 - d. You'll be able to copy between these zPOD Desktop folders and the Computer Desktop
2. How to use *Show Computer Desktop files* in the zPOD Desktop
 - a. Switch to the zPOD Desktop
 - b. Right-click on the icon and select *Show Computer Desktop files*
 - c. You will see folders each corresponding to a drive on your Computer Desktop. You most probably need the one named "C:"
 - d. You'll be able to copy between these Computer Desktop folders and the zPOD Desktop
3. Direct access
 - a. Go to the Z: drive on the zPOD Desktop
 - b. Under this virtual Z: drive, you can find all real drives of the Computer Desktop, such as C: etc. – they all appear as subfolders under the Z: drive
 - c. You can simply Copy any folder taken from the zPOD Desktop, and then paste it here under Z:\C (or wherever you need)

Sharing Internet access

Once Internet access is available on the Computer Desktop, the zPOD Desktop is automatically able to access the Internet using the connection that is configured on the Computer Desktop. This works with any kind of connection, including wireless.

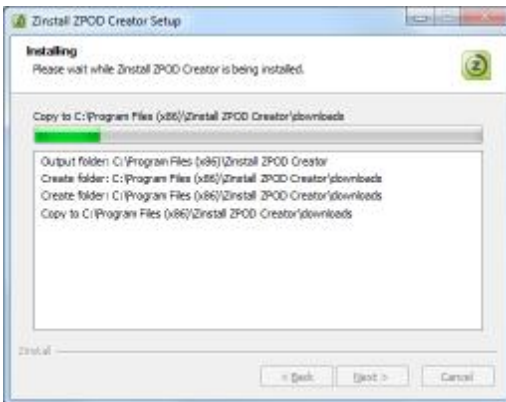
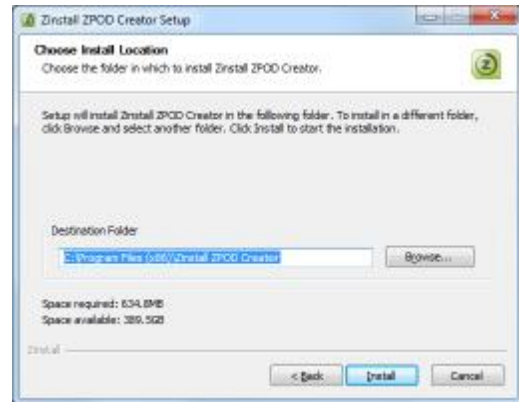
IMPORTANT: Do not alter connection settings in the zPOD Desktop, and **do not use any third-party dialer / connection manager** applications. **ONLY** configure the connection on the Computer Desktop.

Appendix A

Downloading the software from the Internet: Zinstall zPOD Creator

In order to download and install Zinstall zPOD from the Internet:

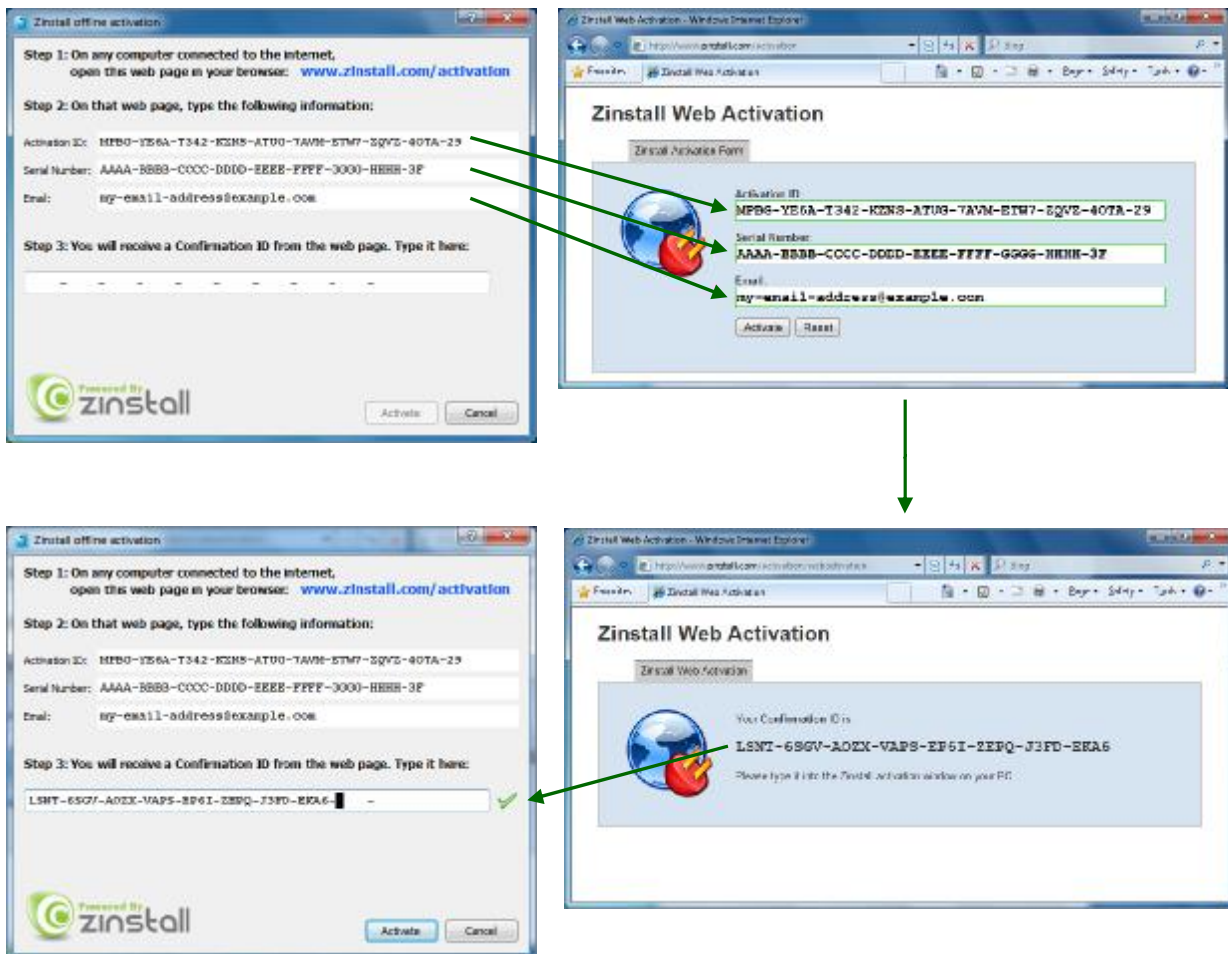
1. Access the download page on Zinstall website, using the link you have received in your License Information email.
2. Download and run the software installer file on your computer
3. Follow the instructions to complete the installation:



Web Activation

If a computer is not connected to the Internet, Zinstall will be unable to activate itself automatically. In this case, Zinstall will prompt you to perform a Web Activation manually.

1. On any computer with an Internet connection, open a browser (for example, Internet Explorer)
2. Go to www.zinstall.com/activation - It doesn't matter which computer you use for this - you can even use a smartphone.
3. In browser Web Activation form, enter the Activation ID, Serial Number and email as they are shown in the running Zinstall window.
4. Click *Activate* in the browser.
5. The Web Activation form will show you a Confirmation ID.
6. Enter this Confirmation ID in the running Zinstall window.
7. Click *Activate* in the running Zinstall window.



CHKDSK

To perform a Windows CHKDSK hard drive consistency check, and fix possible errors, do the following:

1. Open Start Menu, then "My Computer"
2. Right click on your hard drive, select "Properties"
3. Go to the "Tools" tab
4. In the "Error Checking" box, click on "Check Now"
5. Make sure both options are checked: "Automatically fix file system errors" and "Scan for and attempt recovery of bad sectors"
6. Click Start
7. If you are prompted to reboot, accept.

If you have several hard drives, you need run CHKDSK for each of them.

Converting a FAT32 drive to NTFS file system

If some of the drives on your SOURCE computer are using the FAT32 file system, they should be converted into the NTFS file system in order to ensure a reliable transfer. Do the following for each of the FAT32 partitions:

1. Open a command prompt by going to Start Menu -> All Programs -> Accessories -> Command Prompt
2. In the command prompt, type the following command and press enter:
convert c: /FS:NTFS
3. If you are asked to provide a "volume label", type in the label the drive has as seen in My Computer. For example, if My Computer has "Drive C: [My Drive]", you need to type in "My Drive".
4. Answer YES to question about "volume in use, do you wish to force?"
5. Answer YES to question about "system volume, schedule for next boot?"
6. Restart your computer
7. When windows begins to start , let it do a disk check (it will show the message "the type of the filesystem is FAT, press any key to cancel disk check" - do NOT press any key at this stage)
8. Once a disk check is done, conversion to NTFS will begin. This may take some time. Wait for it to finish

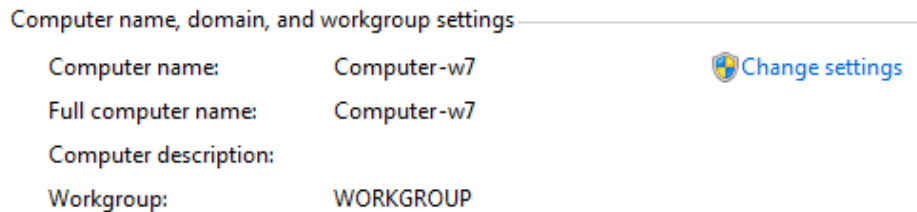
Appendix B - Printer Sharing Guide

After the migration, it will be possible to print to your network printers “out of the box”, as well as print from OLD applications launched on the Computer Desktop.

For direct USB-connected printers, the printer may print from the Computer Desktop, but not from the zPOD Desktop. This is resolved by sharing the printer with the zPOD Desktop. Here is how to do it:

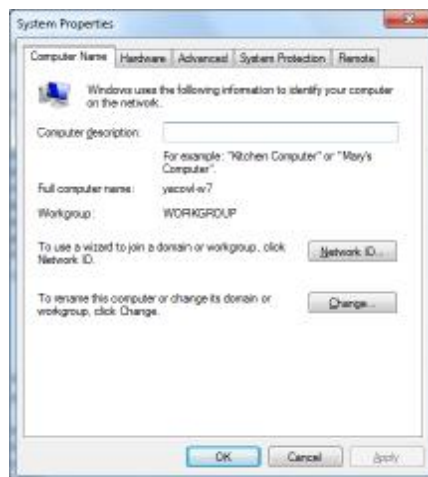
Before you begin:

1. Make sure your printer is installed and configured on the Computer Desktop- that is, you are able to print from Computer Desktop programs.
2. Make sure that both your Computer Desktop and zPOD Desktop are members of the same Workgroup, which by default is named WORKGROUP. If your zPOD Desktop is Windows XP Home, this step is required, since XP Home uses a wrong Workgroup name.
 - a. On Windows 7:
 - i. Open Start Menu
 - ii. Right-click on Computer and select “Properties”
 - iii. The Workgroup name is under “Computer name, domain, and workgroup settings”

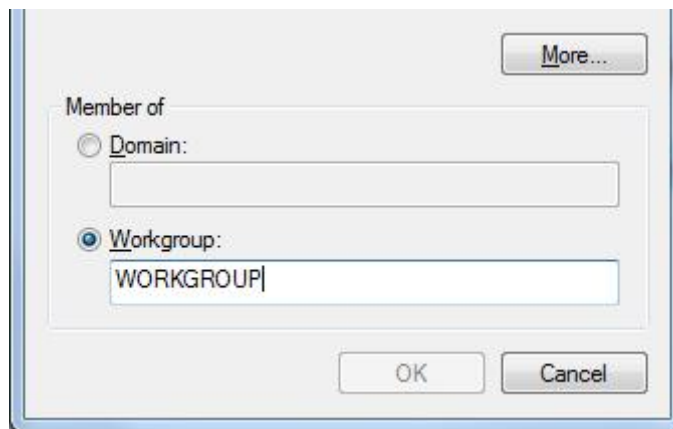


Windows activation

- iv. Click “Change settings”
- v. You will see the “System properties” menu



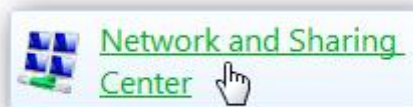
- vi. If you see that the Workgroup name is not WORKGROUP, click “Change settings” and continue to Step C below
- b. On Windows XP:
 - i. Open Start Menu
 - ii. Right-click on My Computer and select “Properties”
 - iii. Go to the “Computer Name” tab
 - iv. If you see that the Workgroup name is not WORKGROUP, click “Change settings” and continue to Step C below
- c. Changing the Workgroup name
 - i. In the “System Properties” menu, click the “Change” button
 - ii. You will see the Computer Name and Workgroup Name settings menu



- iii. Change the workgroup name to WORKGROUP
- iv. Press OK
- v. Restart the computer

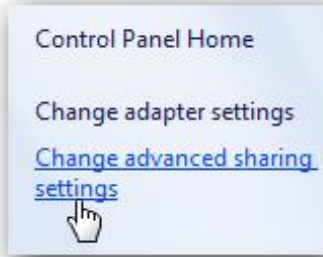
Configure Printer Sharing on the Computer Desktop

- d. On the Computer Desktop, open Start Menu and select “Control Panel”

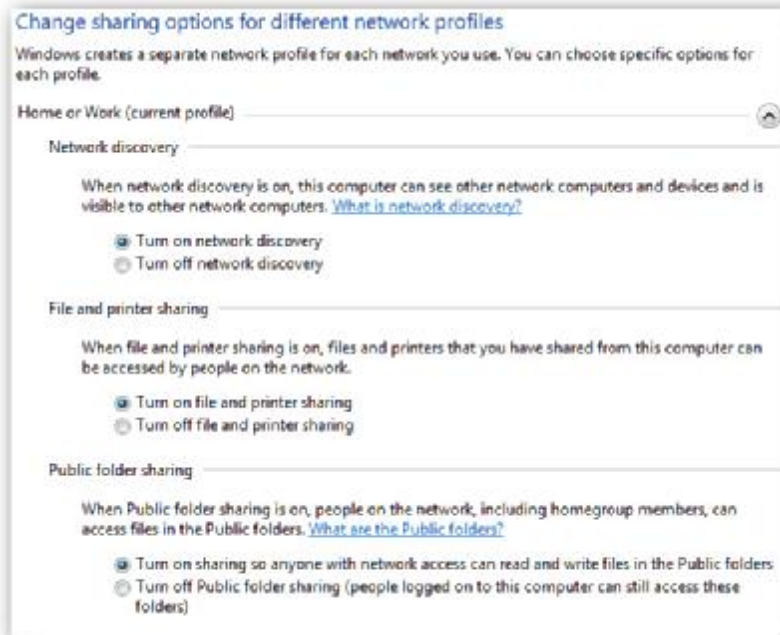


- e. Go to All Control Panel Items -> Network and Sharing Center

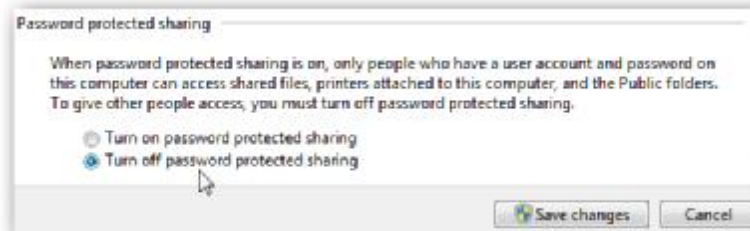
- f. Click on “Change advanced sharing settings”



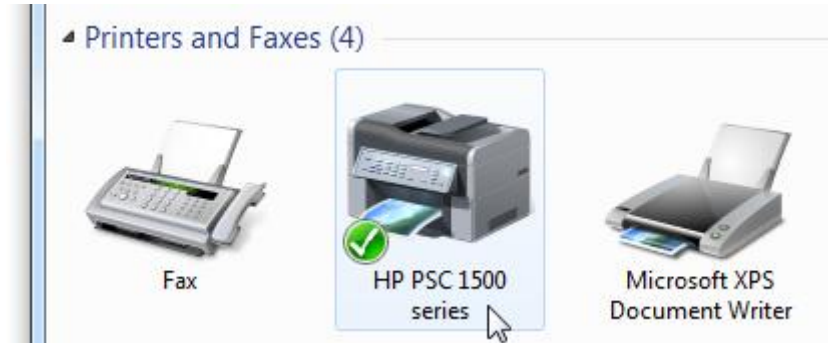
- g. Make sure the following settings are turned on in both the “Home and Work” and the “Public” profiles
 - i. “Network discovery”
 - ii. “File and printer sharing”
 - iii. “Public folder sharing”



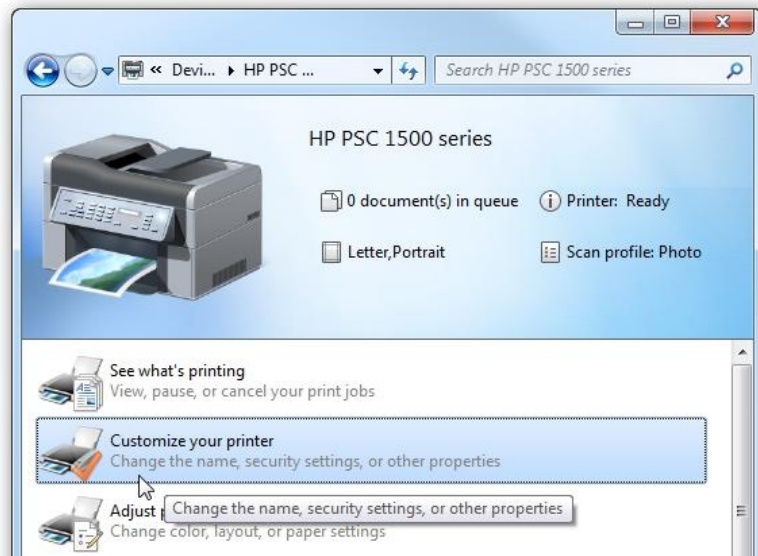
- h. Turn off “Password protected sharing”. This is located in “Advanced Sharing Settings” toward the bottom of the list.



3. Share the printer on the Computer Desktop
 - a. Open Start Menu and select “Devices and Printers”
 - b. Double-click on your printer’s icon



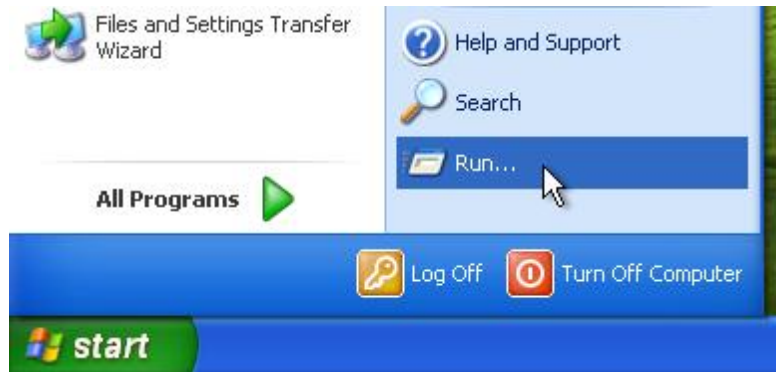
- c. Double-click on “Customize your printer”



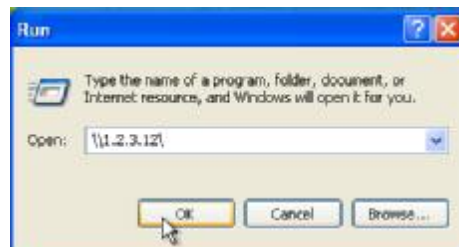
- d. In the “Properties” menu that opens, go to the “Sharing” tab
 - e. Check the “Share this printer” checkbox
 - f. Click OK

Configure Printer Sharing on the zPOD Desktop

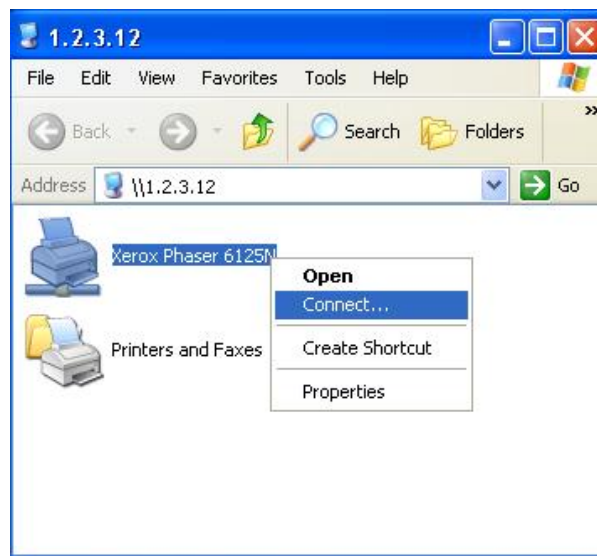
1. Switch to your zPOD Desktop
2. Open Start Menu and select "Run"



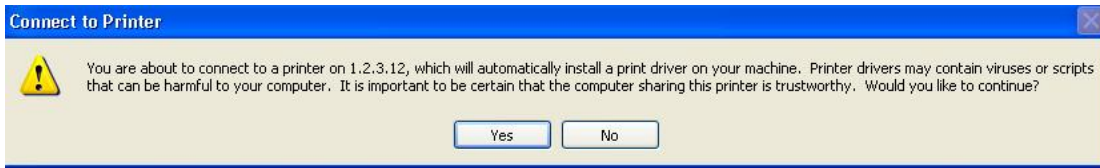
3. Type in "\\1.2.3.12\" (without quotes) and click OK



4. You will see a window with your Computer Desktop's shared printer
5. Right-click on the shared printer and select "Connect"



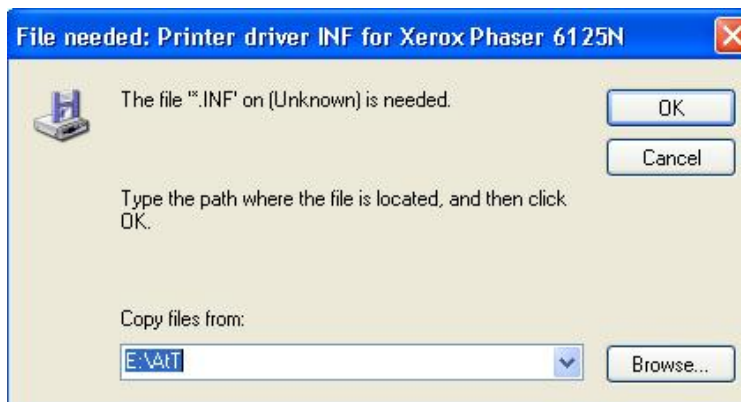
6. Answer “Yes” to the “Connect to Printer” message:



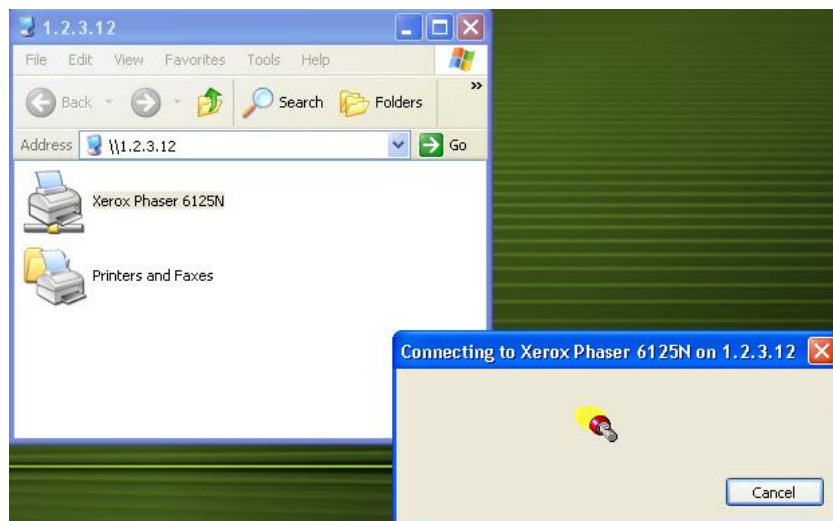
7. If you do not have the correct drivers installed on your zPOD Desktop (i.e. if this printer has never been used on the SOURCE computer), you will need to install the drivers:



8. Insert your driver CD, or download the drivers from your manufacturer’s website. Then, point the wizard to the right path using the “Browse” button:

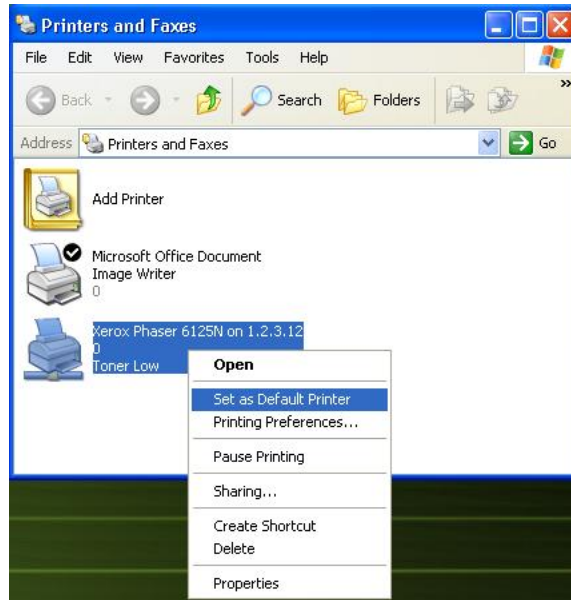


9. You will see a message that the zPOD Desktop is connecting to the printer. Wait for this message to disappear. When the message disappears (without an error message), your printer has been shared successfully.



10. Configure the printer to be the default printer:

- a. Open Start Menu, and select “Printers and Faxes”
- b. Right-click on the newly-shared printer, and select “Set as Default Printer”



11. Your printer is now configured and shared.

Troubleshooting Guide

Message Codes

Message Code	Troubleshooting instructions
10	<p>A currently running application is preventing Zinstall from operating properly. Close down all applications running on your computer and run Zinstall again. If you are unsure which application to close - restart your computer and run Zinstall again.</p>
13	<p>Anti Virus or Firewall blocking Zinstall from loading / Running Zinstall directly after uninstall without rebooting / Valid serial for a wrong product</p> <ol style="list-style-type: none"> 1. Uninstall any anti-virus / firewall software. 2. Restart the computer and run Zinstall again. 3. Make sure the serial number you use matches the product type being activated.
129	<p>File sharing is disabled on the zPOD Desktop (Zinstall XP7/zPOD only) This message means that file sharing is disabled on the zPOD Desktop.</p> <p>Troubleshooting:</p> <ol style="list-style-type: none"> 1. Switch to zPOD Desktop 2. Open My Computer, right-click on C: drive and select "Properties" (you can do this for other drives as well) 3. Go to the "Sharing" tab, and click the message that you "understand the risks" 4. Click on "understand the risks" under "Network Sharing" 5. In the pop-up that appears, select "Just enable file sharing" 6. Click OK 7. The zPOD Desktop's C: drive is now shared, and you can access it from the Computer Desktop using the "Show zPOD Desktop files" option
190	<p>Critical Windows service is corrupted on your computer This message code appears when an essential standard Windows component is either malfunctioning or corrupted. Although such malfunctioning / corrupted component is not part of Zinstall software, it needs to be fixed in order to allow proper execution of Zinstall within the Windows installation. When this message is shown, it also includes detailed information about the name of the malfunctioning component and a failure code which can be used for troubleshooting.</p> <p>Troubleshooting:</p> <ol style="list-style-type: none"> 1. If the problem is caused by Microsoft Windows Management Instrumentation service (WMI) – i.e. Microsoft component malfunction – it should be fixed by utilizing Microsoft's support resources. Instructions can also be found on the following page: http://windowsxp.mvps.org/repairwmi.htm

	<ol style="list-style-type: none"> 2. The following instructions initiate a built-in Windows component repair: <ol style="list-style-type: none"> a. Open Control Panel -> Add/Remove programs b. Click "Add/Remove Windows Components" on the left panel c. Click "Next", and then "Finish" in the dialog that pops up d. Windows will try to reinstall its standard components
<p style="text-align: center;">252</p>	<p>The network connection between your computers has been disconnected during the migration.</p> <p>This may be caused by</p> <ul style="list-style-type: none"> • Faulty network adapter on the old computer • Faulty network switch that fails during the migration, because of its failure to handle of large volumes of data copied • Firewall/antivirus/security software interfering with network traffic. <p>Troubleshooting:</p> <ol style="list-style-type: none"> 1. Make sure the network cable and adapters are properly connected physically. 2. Make sure both old and new computers are online and not turned off / hibernating 3. Make sure there are no firewalls/antiviruses/security software installed / running on either old or new computers 4. If you are using a direct cable connection, use a router connection instead. 5. If you are using a router connection, use a direct cable connection instead 6. Close all programs on both computer before starting the migration again <p>If the problem persists, the recommended solution is:</p> <ol style="list-style-type: none"> 1. Remove the hard drive from the old computer and connect it to the new computer. 2. Perform the migration using that hard drive as migration source (see User Guide for detailed instructions)
<p style="text-align: center;">254</p>	<p>VSS issue</p> <p>Volume Shadow copy Service (VSS) is a Windows component that allows creating a snapshot of a volume in order to copy it in a consistent manner. For more details, see Volume Shadow Copy Service Overview.</p> <p>Zinstall uses VSS on the source computer in order to create a consistent copy of all its disks. In case of a VSS problem, Zinstall can still perform the migration, but this may cause issues in later stages of the migration, if file system and/or registry activity happens on the source computer during the migration.</p> <p>If Zinstall shows a warning about VSS, either close all applications on the source computer in order to lower the chances of problems later on, or resolve the VSS problem before proceeding with the migration process, according to the following guide.</p> <p>How to solve VSS problems?</p> <p>Windows XP</p> <ol style="list-style-type: none"> 1. On your SOURCE computer, download the vshadow utility from: http://www.zinstall.com/sto/tools/vshadow.exe

	<ol style="list-style-type: none"> 2. Open a command prompt and for each volume on your source computer, run "vshadow x:" where "x" is the volume drive letter. For example: "vshadow c:" This should result in a lot of text being printed out. 3. If the VSS is working fine, the output should end with the line "Snapshot creation done." 4. If a VSS problem is still present, the output will end with a detailed problem description and error code. 5. You can use this problem description and error code to either contact Microsoft's support or try and find a solution using available knowledge base and Internet sources. <p>Once you get VSS to work, run the migration again.</p>
<p>259</p>	<p>Essential components are corrupted or missing on your old Windows installation See Message 260 (below)</p>
<p>260</p>	<p>Essential components are corrupted or missing on your old Windows installation This message means that some old Windows component is corrupted and has prevented the migration from completing successfully.</p> <p>Troubleshooting:</p> <ol style="list-style-type: none"> 1. Perform a CHKDSK - hard drive consistency check - on the hard drive of the old computer 2. Restart both the old and the new computers 3. Then run the migration again
<p>262</p>	<p>General error Troubleshooting:</p> <ol style="list-style-type: none"> 1. Perform a CHKDSK - hard drive consistency check - on the hard drive of the old computer 2. Make sure there are no firewall/antivirus/security software installed / running on 3. Restart both the old and the new computers 4. Then run the migration again
<p>276</p>	<p>Incompatible Windows mode Restart the TARGET computer. Right click the Zinstall tray icon, choose <i>Switch to zPOD Desktop</i>, and wait for fine tuning procedure to finish. Once it is finished, the migration has completed successfully.</p>
<p>277</p>	<p>Critical drivers in your old Windows are corrupted or incompatible Critical system drivers from your old Windows generate a fundamental malfunction when transferred to a different system. These are usually third-party drivers, which implement or replace low-level hardware functions. When hardware changes, these drivers lead to a full system fault.</p>

	<p>Troubleshooting: Uninstall known unconventional drivers from the old computer, and perform the migration again.</p>
<p>279</p>	<p>OS boot loader is incompatible or corrupted This message code usually appears if your source computer had a custom boot loader or a non-standard dual-boot configuration.</p> <p>Troubleshooting:</p> <ol style="list-style-type: none"> 1. Run the icon called “Zinstall Host Utility” (NOT the installation file – we do not want to run the migration again) from your Computer Desktop. This will make the Zinstall tray icon appear in system tray. 2. Right-click the tray icon and choose “Switch to Old Desktop” to start the “fine tuning” stage of Zinstall migration process 3. You will see a progress indication message stating that the process has begun 4. Once you see the message, right-click the tray icon and choose “Switch to zPOD Desktop” again to switch. 5. On the zPOD Desktop, select the correct Windows installation to boot from the boot menu. 6. When you do this for the first time, Zinstall will configure your old environment: <ol style="list-style-type: none"> a. You will see your Windows boot (or show the log on screen). b. You will see Zinstall perform some configurations c. You will then see the XP environment shut down 7. Please do not interfere with this initial configuration process in any way, and wait for the zPOD Desktop to shut down. This may take some time. 8. After the environment has been configured, you are welcome to use zPOD Desktop as usual. <p>Note that you can use a keyboard shortcut at any time to switch back to Computer Desktop (in case you are “stuck” in the old environment).</p> <p>The keyboard shortcut to switch back is ScrollLock + B.</p>
<p>281</p>	<p>Hardware Assisted Virtualization is required for a 64-bit Old OS (Zinstall XP7 / zPOD) The source computer’s OS is a 64-bit system. Such system requires the Hardware Assisted Virtualization (HAV) feature to be enabled on the new computer.</p> <p>Troubleshooting:</p> <ol style="list-style-type: none"> 1. Check that HAV is supported by this CPU model 2. If HAV is supported, but the error message was received, make sure that HAV is enabled in the BIOS of the target computer. Please use the following link for official instructions on enabling HAV: http://www.microsoft.com/windows/virtual-pc/support/configure-bios.aspx <p>To check whether your CPU supports this feature, search for your CPU’s model on the</p>

	<p>manufacturer’s website, and check whether it supports Hardware Assisted Virtualization (called “VT” by Intel and “AMD-V” by AMD). Intel: http://www.intel.com/p/en_US/products?iid=subhdr+prodlook#fragment-a-5 AMD: http://www.amd.com/us/products/Pages/products.aspx</p>
<p>292</p>	<p>zPOD target external drive cannot be FAT32 The target external drive is formatted using the FAT32 file system. This is an outdated file system, which does not support creating a zPOD environment.</p> <p>Please select a different target drive or format the currently target drive using the up-to-date NTFS file system before running zPOD.</p> <p><i>See page 23, Converting a FAT32 drive to NTFS file system for instructions.</i></p>
<p>298</p>	<p>One or more of the partitions on the old computer’s hard drive are formatted using the FAT32 file system</p> <p>For a reliable transfer, FAT32 partitions should be upgraded to the NTFS file system.</p> <p>Troubleshooting: Please do the following for each of the partitions mentioned in the message you have seen.</p> <ol style="list-style-type: none"> 1. Open a command prompt by going to Start Menu -> All Programs -> Accessories -> Command Prompt 2. In the command prompt, type the following command and press enter: convert c: /FS:NTFS 3. If you are asked to provide a "volume label", type in the label the drive has as seen in My Computer. For example, if My Computer has "Drive C: [My Drive]", you need to type in "My Drive". 4. Answer YES to question about “volume in use, do you wish to force?” 5. Answer YES to question about “system volume, schedule for next boot?” 6. Restart your computer 7. When windows begins to start , let it do a disk check (it will show the message “the type of the file system is FAT, press any key to cancel disk check” - do NOT press any key at this stage) 8. Once a disk check is done, conversion to NTFS will begin. This may take some time, please wait for it to finish 9. Once the conversion is finished, Windows will reboot itself once more. <p>Your file system is now upgraded to NTFS.</p>
<p>322</p>	<p>Old and New computers cannot connect The Old and New computers cannot find each other on the network.</p> <p>Troubleshooting:</p> <ol style="list-style-type: none"> 1. Make sure a network cable (not a USB cable!) connects the computers 2. Make sure Zinstall is running on both - the old and the new - computers, and the

	<p>appropriate Zinstall windows appear on both computers' screens</p> <ol style="list-style-type: none"> 3. Make sure the network cable and adapters are physically connected properly and securely. 4. Make sure no firewall/antivirus/security software is installed and running on either old or new computers 5. Make sure network adapters are installed properly on both computers – the adapters have to be shown in Control Panel -> Network Connections 6. Make sure network adapters are enabled on both computers (marked as “Enabled” in Network Connections) <p>If the problem persists:</p> <ol style="list-style-type: none"> 1. If a direct cable connection was used, try using a router connection instead. 2. If a router connection was used, try using a direct cable connection instead. 3. Close all programs on both computers before starting the migration again <p>If nothing of the above helped to overcome the problem, use an alternative transfer method:</p> <ol style="list-style-type: none"> 1. Remove the hard drive from the old computer and connect it to the new computer. 2. Perform the migration using that hard drive as migration source - see User Guide for detailed instructions.
<p>328</p>	<p>VSS warning To troubleshoot, see Message 254 (above)</p>

Before the Migration

What is a Network / Ethernet / LAN cable?

The cable which is needed to connect the computers directly is a regular network cable. It's also called "Ethernet cable" or "LAN cable". It usually comes packaged with new computers when purchased. Otherwise, it is available in any electronics or computer shop for a few dollars.

Here is what it looks like:



The old computer is broken. Can I still use Zinstall to transfer?

Yes. Zinstall is indeed capable of migrating even a "broken" computer, which cannot be started - though it depends on what exactly is broken.

If the problem is with the computer itself, namely some of the hardware is broken down, or if the computer cannot be turned on, but the hard drive is still "healthy" – here is what should be done:

1. Take the hard drive out of the old computer
2. Connect that hard drive to the new computer (either internally or externally using a simple USB adapter, available at any computer store for a couple of dollars)
3. Run Zinstall
4. When prompted, select "I only have this computer" and "I am migrating from another hard drive"
5. If the drive is functional and contains a correct Windows installation, Zinstall will recognize the drive as migration source and allow you to transfer the environment to the new computer.

When updating a Windows XP computer to Windows 7, should Windows 7 be installed first, before running Zinstall?

Yes – just make sure to install Windows 7 according to instructions in the User Guide.

When upgrading a computer to Windows 7 with Zinstall, Windows 7 should be installed first, "on top" of the existing XP, choosing the "Custom/Advanced" installation mode.

When Windows 7 is installed, none of the old programs, settings and files can be accessed any longer. Without using Zinstall, they cannot be made accessible again.

Zinstall is run after the Windows 7 installation is complete, and Zinstall then restores the entire old environment, with all of the old programs, settings and files, on the new system.

Important: Make sure to follow the instructions in the User Guide in order to perform the Windows 7 installation correctly. It is a good idea to backup your system before installing Windows 7.

There is not enough space on the target computer. What can be done?

You can use Zinstall filtering capabilities to filter out some content types (such as movies, pictures and music, which take up most of the space on a typical system). See *Is it possible to select which files to transfer?* below.

Alternatively, you can free up some space by moving some files to an external drive, or deleting unneeded files.

Another option is to upgrade your hard drive to a larger one. To transfer your system to the new hard drive, use Zinstall HDD Edition (www.zinstall.com/products/zinstall-hdd).

Do I have to backup my computer before upgrading to Windows 7 with Zinstall?

While Zinstall does not require performing a backup for correct and complete operation, if you are performing an in-place upgrade to Windows 7, it is especially recommended to have a full backup of your system. This will enable you to rollback to your old system in case you will experience any trouble, such as Windows 7 installation getting "stuck" (even before you have the chance to use Zinstall).

Zinstall disappears after showing the initial "Loading..." screen

This type of behavior means that a third-party application is preventing Zinstall from running. This is usually caused by security software which is not configured correctly, and simply terminates Zinstall without even asking the user.

Please uninstall the security software from the computer, or configure it in a way that would allow Zinstall to run. Then, run Zinstall again.

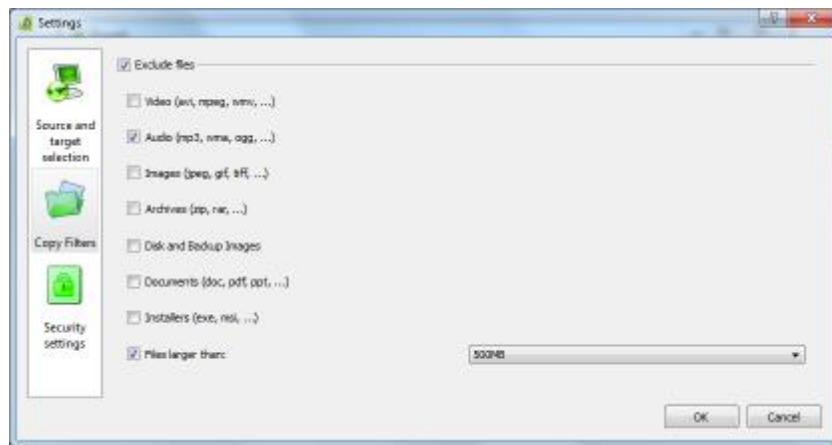
During the migration

Is it possible to select which files to transfer?

Yes.

Before you press the “Go” button to start the transfer, use the “Advanced” button to filter out content types you do not want to transfer.

For example, you can filter out movies, music or simply files larger than 500GB – just check the appropriate options in the “Advanced” menu:



Is it possible to select which programs to transfer?

No. Zinstall captures your entire SOURCE environment, and then implants it into the TARGET so that you can work with all your old programs just like you did on your SOURCE system.

All OLD applications are kept fully integrated in isolated virtual container on your TARGET system. That means that you can instantaneously switch back and forth between the OLD and New environments, intuitively copy text and files between them as well as directly access any files from one another.

By default, Zinstall transfers your entire system to the new computer. This includes all applications, settings and files. You can selectively uninstall the apps you don't need on the new computer. You can also filter out content types (i.e., leaving behind movies or music).

The transferred programs do not conflict and do not interfere with any installed programs on the new computer, so - for example - you'll be able to use Office 2007 alongside Office 2003 from the old computer.

You can perform the transfer even if you already have some programs installed on the new computer - they will remain perfectly safe.

The Old and New computers cannot find each other – “searching” for more than 5 minutes

See *Message Codes, Old and New computers cannot connect* above for detailed troubleshooting instructions.

The external hard drive used for zPod has USB connection problems

There are cases when external hard drives connected by USB are malfunctioning. For instance, the malfunction can cause the drive to disconnect and reconnect repeatedly.

If the external drive which contains the zPOD environment disconnects from the computer, while using the zPOD environment – an error will occur. Since the connection is cut off, all unsaved data from the current zPOD run is lost. You need to restart the computer, and run the zPOD environment again.

Make sure the USB cable and connection are properly connected at all times, and do not disturb the drive while using the zPOD.

If you see the disconnection problem repeats, consider replacing the external HDD hardware.

After the Migration

How to run zPOD Desktop applications from the Computer Desktop / Start Menu?

After the migration is completed, Zinstall puts shortcuts for all the applications from the source computer on the target computer.

By default, all desktop and start menu shortcuts from the old computer are integrated into the respective locations on the new computer, with a "Z^ " prefix.

Note: If your SOURCE Windows is Windows Vista or older than XP Professional SP3, zPOD Desktop applications will launch on the zPOD Desktop, instead of the Computer Desktop.

Microsoft Windows / Office Activation

In some cases, Microsoft requires re-activation of its software when Windows determines that system's component(s) are changed. Microsoft policy in this regard varies from time to time and depends on several factors, such as: which and how many hardware components were changed, and - most significantly - which particular edition of Microsoft software is used.

Windows / Office re-activation can be done online through the software itself (when prompted to re-activate), or via Microsoft website, however - it is subject of Microsoft license terms and its actual policies.

Printer problems on the zPOD Desktop

In some cases, USB-connected printers must be shared with the zPOD Desktop in order to allow printing correctly.

First, make sure that the printer can print from the Computer Desktop. If you have successfully printed a test page from the Computer Desktop, you can share the printer.

See the detailed instructions in Appendix B of the User Guide.

How to copy files and text between the desktops?

Files and text can be copied between the two channels, just like files and text are copied between two different applications. For example, here is how to copy a file from the zPOD Desktop to the Computer Desktop:

5. Right-click on the file in the zPOD Desktop
6. Select "Copy"
7. Switch to the Computer Desktop
8. Paste the file

Once the “copy” option is used on file or text on one channel, that content will be available for pasting on the other channel.

There are three alternative ways to copy files and directories between two environments:

4. How to use *Show zPOD Desktop files* in the Computer Desktop
 - a. Switch to the Computer Desktop
 - b. Right-click on the icon and select *Show zPOD Desktop files*
 - c. You will see folders each corresponding to a drive on your zPOD Desktop. You most probably need the one named "C:"
 - d. You'll be able to copy between these zPOD Desktop folders and the Computer Desktop
5. How to use *Show Computer Desktop files* in the zPOD Desktop
 - a. Switch to the zPOD Desktop
 - b. Right-click on the icon and select *Show Computer Desktop files*
 - c. You will see folders each corresponding to a drive on your Computer Desktop. You most probably need the one named "C:"
 - d. You'll be able to copy between these Computer Desktop folders and the zPOD Desktop
6. Direct access
 - a. Go to the Z: drive on the zPOD Desktop
 - b. Under this virtual Z: drive, you can find all real drives of the Computer Desktop, such as C: etc. – they all appear as subfolders under the Z: drive
 - c. You can simply Copy any folder taken from the zPOD Desktop, and then paste it here under Z:\C (or wherever you need)

Can Security Software be run on both desktops?

Yes, it will not conflict with the other desktop. Make sure to configure the Security Software allowing Zinstall components full access to run and access network and Internet – consult the manufacturer of the Security Software on how to do that.

How to access external USB drives on the zPOD Desktop?

To access external storage drives connected to the computer, right-click on the Zinstall tray icon in the zPOD Desktop, and select "Show Computer Desktop files"

You will see all the drives (internal and external) on the computer, available and accessible - both manually and from applications. Look for the external drive folder (generally E: or F:).

You can also access those by going to the drive Z: from My Computer or any other application.

1. Go to the Z: drive on the zPOD Desktop
2. Under this virtual Z: drive, you can find all real drives of the Computer Desktop, such as C: etc. – they all appear as subfolders under the Z: drive

3. You can simply Copy any folder taken from the zPOD Desktop, and then paste it here under Z:\C (or wherever you need)

Mouse cursor is not visible on the zPOD Desktop

In some rare cases, in which legacy third-party software interferes with specific outdated mouse drivers, the mouse cursor may not be visible on the zPOD Desktop. To resolve:

1. Right click on the desktop and select "Properties"
2. Go to the "Settings" tab and click "Advanced"
3. Go to the "Troubleshooting" tab
4. Slide the "Hardware acceleration" slider one step to the left (this will change the text under it to say that cursor and bitmap accelerations are disabled)
5. Click "Apply"

You will now be able to see the cursor.

Internet connection is not available on the zPOD Desktop

The Internet connection on the zPOD Desktop is automatically shared with the Computer Desktop. The zPOD Desktop is connected to network using a NAT (Network Address Translation) mechanism. Thus, if you have an operational connection on the Computer Desktop, you will have the same on the zPOD Desktop.

Accordingly, there is no need at all to configure dial-up connections or re-configure IP addresses manually inside the zPOD Desktop.

IMPORTANT: Manually changing the network settings in the zPOD Desktop might cause loss of Internet and network connectivity.

If you are having Internet connection troubles on the zPOD Desktop:

1. Verify that the Computer Desktop is connected to the Internet (i.e. browse successfully to www.google.com). If it is – continue to the next step.
2. Make sure that your Local Area Connection in the zPOD Desktop is configured to obtain an IP address automatically:
 - a. Open "Start Menu", and select "Control Panel"
 - b. Open "Network Connections"
 - c. Right-click on "Local Area Connection" and select "Properties"
 - d. In the protocol list, find "TCP/IP" and go to "Properties"
 - e. Make sure the option selected is to "obtain IP address automatically (DHCP)"
3. If a firewall is running on the Computer Desktop or on the zPOD Desktop – disable it or configure the firewall to allow Zinstall traffic (consult your firewall software manufacturer).
4. Restart your computer to apply the above settings.

After switching to zPOD Desktop, the system automatically switches back to Computer Desktop

This kind of behavior is caused by a third-party application, which does not comply with standard Windows desktop control policies, and thus might interfere with the correct system operation.

To resolve, find and remove / disable the application which is causing this issue. Among applications known to cause the issue are:

- Acronis Scheduler Helper
- Seagate Scheduler Helper
- Several screen management applications

Zinstall tray icon has disappeared or does not appear on Windows startup (Zinstall XP7 only)

Zinstall tray icon should appear in system tray on the Computer Desktop after your Windows loads.

If the icon does not appear for any reason, it is possible to run it manually from the desktop, by launching the desktop shortcut called "ZinstallHostUtility" - or from the Zinstall folder in Windows Start Menu.

In order to make sure it runs on Windows startup:

1. Open a command prompt by going to "Start Menu" -> "All Programs" -> "Accessories" -> "Command prompt"
2. Run the command:
msconfig
3. Go to the "Startup" tab
4. Find the item named "Zinstall" and make sure the checkbox is checked.

Mouse cursor / screen resolution issues on zPOD Desktop

If after switching to the zPOD Desktop the screen is very small and/or the mouse does not move smoothly, this means that Zinstall Guest Utility was not properly installed on the zPOD Desktop, and should be installed manually.

Follow these instructions on the zPOD Desktop:

1. Go to the Start Menu > Zinstall
2. Run "Install guest utility"
3. Wait for the installation to finish successfully and restart the zPOD Desktop / ZPOD.

Can I use Zinstall with dual monitors?

Yes - dual monitors are supported when launching the OLD applications directly from the Computer Desktop.

Note that when you perform a full switch to the zPOD Desktop, it will only be available on the primary monitor.

Using server applications inside the zPOD Desktop

The zPOD Desktop is connected to the network using a NAT connection. This means that server applications will not be able to serve incoming requests out-of-the-box when running inside the zPOD Desktop.

In order to configure incoming connection request pass-through, port forwarding should be configured using the configuration file.

How to properly shut down your TARGET computer running Zinstall

1. Make sure the zPOD Desktop / ZPOD is currently not running:
 - a. Put your mouse cursor over the Zinstall tray icon - this will cause a tooltip text to appear.
 - b. If the text says "(Off)" - that means the zPOD Desktop is currently NOT running, and you can shut down the computer
 - c. If the text says "(Running)" - that means the zPOD Desktop is currently running, and you need to shut Zinstall down before shutting down the computer
 - i. Switch to zPOD Desktop
 - ii. Shut down the zPOD Desktop (using Start Menu -> Turn off/Shut down)
 - iii. Wait for the zPOD Desktop to shut down. You will now be switched back to the Computer Desktop.
2. You can now shut down your TARGET computer

"Access denied" message is received when using the "Show zPOD Desktop files"

If the zPOD Desktop is Windows XP Home, and you do use the "Show zPOD Desktop files" feature, and go to a folder which does not have permissions for the Everyone group, you will get an "Access denied" Windows message.

Troubleshooting:

1. Switch to zPOD Desktop
2. Find the folder you were trying to access
3. Right click on the folder, select "Properties" and go to the "Sharing" tab
4. Under "Network Sharing" section, check both checkboxes ("Share this folder on the network" and "Allow network users to change my files")
5. Click OK

6. Your folder is now accessible from the zPOD Desktop

Advanced

How to create a shortcut to zPOD Desktop application on the Computer Desktop?

1. Make a copy of an existing Zinstall guest app shortcut (a shortcut whose name starts with "Z^")
2. Rename it to the name you want to use.
3. Right click on the new shortcut it and select properties
4. Go to the "Target" field, there you will see a line like the following:
`"<Your external drive>:\Zinstall\ZinstallHostUtility\ZinstallHostUtility.exe" run_guest_command "C:\Documents and Settings\user\Desktop\Microsoft Office PowerPoint 2003.lnk" ""`
5. Replace "C:\Documents and Settings\user\Desktop\Microsoft Office PowerPoint 2003.lnk" with the file name of the application you want this shortcut to run as it exists on the zPOD Desktop.
6. For example, if you want to run "c:\Program Files\Mozilla\Firefox.exe" the new "Target" field should be changed to:
`"<Your external drive>:\Zinstall\ZinstallHostUtility\ZinstallHostUtility.exe" run_guest_command "c:\Program Files\Mozilla\Firefox.exe" ""`

How to revert the zPOD Desktop to original state?

NOTE: You will lose ALL changes made to the zPOD Desktop since the original migration or the last snapshot taken!

1. Switch to the zPOD Desktop
2. Shut down the zPOD Desktop
3. On the Computer Desktop, right-click the Zinstall tray icon (bottom-right corner of the screen, near the clock)
4. Select "Advanced"
5. Go to the "Snapshots" tab on the left
6. Select the Revert option

How to backup the Zinstall environment

To back up the entire Zinstall virtual container:

1. Switch to the zPOD Desktop
2. Shut down the zPOD Desktop
3. On the Computer Desktop, find the Zinstall folder (usually located at C:\Zinstall)
4. Right click on the folder and select Properties
 - a. Make sure the indicated folder size is not zero
 - b. Otherwise, find the top level folder called Zinstall on another drive (i.e. D:\Zinstall, E:\Zinstall etc.)
5. Copy the entire Zinstall folder to the backup location (external drive, another folder etc...)

6. This will allow restoring the entire virtual container along with all data, settings, programs and OS

Backing up specific files from within the zPOD Desktop to the Computer Desktop:

1. Switch to your zPOD Desktop, and open "My Computer"
2. Navigate to the files you wish to back up
3. Copy the files or folders you wish to back up (select the files, right click, choose Copy)
4. Navigate to the "Z:\\" drive in My Computer
5. Navigate to the destination drive from the host computer, for example Z:\C
6. Create a new folder called "Backup"
7. Paste the files to this folder (Right click on an empty area, and choose Paste)
8. On the Computer Desktop, navigate to C:\Backup in order to view & verify the backed up files

How to uninstall the Zinstall environment

Follow the instructions for uninstalling/removing Zinstall from your computer.

Uninstall the software:

1. Switch to the zPOD Desktop
2. Shut down the zPOD Desktop
3. On your Computer Desktop, uninstall Zinstall:
 - a. Open Start Menu, and select Control Panel
 - b. Go to "Add/Remove Programs" / "Uninstall a Program"
 - c. Find the Zinstall entry in the program list
 - d. Click "Uninstall" on that entry

Removing the data backup:

1. Delete the Zinstall folder – usually located at C:\Zinstall.

What keyboard shortcuts are available for Zinstall?

ScrollLock + Del	Send "Ctrl-Alt-Del" to the zPOD Desktop
ScrollLock + B	Instantly switch back to Computer Desktop
ScrollLock + Q	Close the zPOD Desktop- opens a dialog with different options for closing the zPOD Desktop
ScrollLock + R	Restart the zPOD Desktop
ScrollLock + G	Attempt fixing resolution if it's not full screen